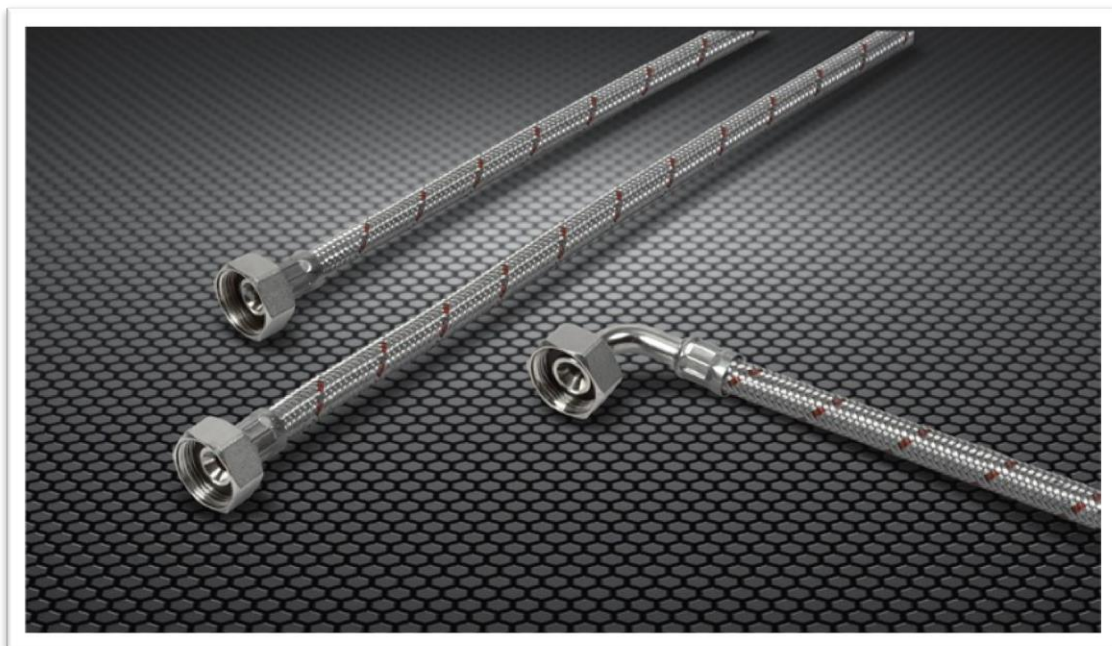


® armalab





FARFLEX SYSTEM

PRODUCT OVERVIEW

Nuova Far offers hoses and flexible Stainless Steel pipes as a solution to make the installation in the laboratory where safety and efficiency are required in the easiest way. Nuova Far hoses are the best performing solution where flexibility is required, and installation with flexible hoses allow to save a lot of time, in other words reduce the installation costs.

Select the proper flex material for the proper media

<i>Hose material Medium</i>	<i>SPX (braided)</i>	<i>LLDPE</i>	<i>Stainless Steel (not braided)</i>	<i>Stainless Steel (braided)</i>
<i>Potable/non potable/ Coolant water</i>	<i>ok</i>			
<i>Special water sorts</i>		<i>ok</i>		
<i>Burning gases</i>			<i>ok</i>	<i>ok</i>
<i>Non-Burning 2.0 gases/Vacuum</i>	<i>ok</i>			
<i>Non -Burning 4.0 gases/ Oxygen</i>	<i>ok</i>			
<i>High purity 5.0 gases</i>			<i>ok</i>	<i>ok</i>
<i>High purity 6.0 gases</i>			<i>ok</i>	<i>ok</i>



FARFLEX SYSTEM

HOSES SELECTION GUIDE

Factors \ Hose	SPX	LLDPE	SSN (not braided)	SSB (braided)
Inner hose material with media contact	SPX	LLDPE PVDF	Corrugated Stainless Steel AISI 316	Corrugated Stainless Steel AISI 316
Outer hose material / braiding	Stainless Steel AISI 304	NONE	NONE	Stainless Steel AISI 304
Sealing material	EPDM FKM	EPDM	PVDF FKM	PVDF
Inside Diameter	6mm.	7 mm.	8 mm	8 mm
Outside Diameter	10 mm.	10 mm.	12 mm.	18 mm.
Max. working pressure	10 bar (water) 16 bar (gases)	10 bar by 23°C 6 bar by 65°C	10 bar	95 bar
Max working temperature	90°C	65°C	-200°C - +600°C	-200°C - +600°C
Min. bending radius inner	40 mm.	90 mm.	25 mm.	25 mm.
UV resistance	++	+	+++	+++



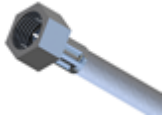
FARFLEX SYSTEM

SPX HOSES

INLET CONNECTIONS

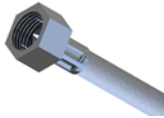
Female G3/8" swivelling nut

-A-



Female G1/2" swivelling nut

-B-



OD10mm. Connections for
compression fitting

-C-



OD12mm. Connections for
compression fitting

-D-



OD15mm. Connections for
compression fitting

-E-



Straight connection M10x1
with EPDM O-ring

-H-



OUTLET CONNECTIONS

Female G3/8" swivelling nut

-A-



Female G1/2" swivelling nut

-B-



90° Female G3/8" swivelling nut

-F-



90° Female G1/2" swivelling nut

-G-



OD10mm. Connections for
compression fitting

-C-



OD12mm. Connections for
compression fitting

-D-



OD15mm. Connections for
compression fitting

-E-



HOSE

HOSE LENGTHS

Definition of length



Standard lengths of hoses:

400mm

500mm

1000mm

1500mm

2000mm

Other lengths are available
on request



FARFLEX SYSTEM

SPX HOSES

INLET CONNECTIONS

Straight connection M8x1
with EPDM O-ring

-J-



Straight connection M12x1
with EPDM O-ring

-T-



Straight UNIFAR connection
with FKM O-ring

-L-



OUTLET CONNECTIONS

Straight UNIFAR connection
with FKM O-ring

-L-



90° - UNIFAR connection
with FKM O-ring

-K-



90° - UNIFAR connection
with FKM O-ring

-K-



HOSE

HOSE LENGTHS

Definition of length



Standard lengths of hoses:

400mm

500mm

1000mm

1500mm

2000mm

Other lengths are available
on request



STAINLESS STEEL NOT BRAIDED HOSES - SSN

INLET CONNECTIONS

Female G1/2" swivelling nut

-B-



Straight connection M10x1
with NBR O-ring

-H-



Straight connection G1/4"
with NBR O-ring

-I-



Straight UNIFAR connection
with FKM O-ring

-L-



90° - UNIFAR connection
with FKM O-ring

-K-



OUTLET CONNECTIONS

Female G1/2" swivelling nut

-B-



90° Female G1/2" swivelling nut

-G-



OD10mm. Connections for
compression fitting

-C-



OD12mm. Connections for
compression fitting

-D-



OD15mm. Connections for
compression fitting

-E-



Straight UNIFAR connection
with FKM O-ring

-L-



90° - UNIFAR connection
with FKM O-ring

-K-



HOSE

HOSE LENGTHS

Definition of length



Standard lengths of hoses:

400mm

500mm

1000mm

1500mm

2000mm

Other lengths are available
on request



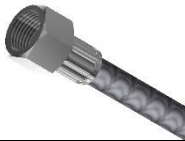
FARFLEX SYSTEM

STAINLESS STEEL BRAIDED HOSES - SSB

INLET CONNECTIONS

Female G1/2" swivelling nut

-B-



Straight connection M10x1
with NBR O-ring

-H-



Straight connection G1/4"
with NBR O-ring

-I-



OUTLET CONNECTIONS

Female G1/2" swivelling nut

-B-



90° Female G1/2" swivelling nut

-G-



OD10mm. Connections for
compression fitting

-C-



OD12mm. Connections for
compression fitting

-D-



OD15mm. Connections for
compression fitting

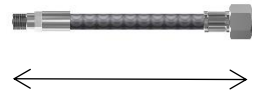
-E-



HOSE

HOSE LENGTHS

Definition of length



Standard lengths of hoses:

400mm

500mm

1000mm

1500mm

2000mm

Other lengths are available
on request



FARFLEX SYSTEM

LLDPE HOSES

INLET CONNECTIONS

OD10mm. pipe connections

-L-



Male G1/4" J.G. connection

-M-



Male G3/8" J.G. connection

-N-



Male G1/2" J.G. connection

-O-



OUTLET CONNECTIONS

OD10mm. pipe connections

-L-



Male G1/4" J.G. connection

-M-



90° Male G1/4" J.G. connection

-P-



HOSE

HOSE LENGTHS

Any lengths are
available on request



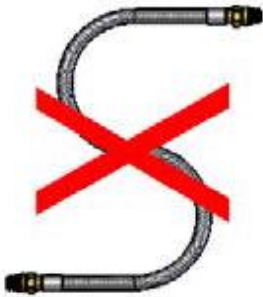
INSTALLATION OF HOSES



The hose/flexible pipe must have a soft bend



The hose/flexible pipe may not be stretched completely



The hose/flexible pipe may not get a s-shaped bend



Avoid turning of the hose/flexible pipe

Before the mounting

- Flush and clean the line where the flex has to be connected

During mounting

- Install the flexible connection hose/pipe so that torsion, breaking and stretching of the hose are avoided
- Install the flexible connection hose/pipe, so that physical stress is avoided, e.g. wear and tear of the surface of the hose/pipe
- The hose/pipe may not be installed in strongly corrosive environments, if this conditions can't be avoided please contact us for the more appropriate model

After mounting

- Test the tightness of the hose/pipe before start using the product
- The hose/pipe must be mounted in an accessible position for following inspection

