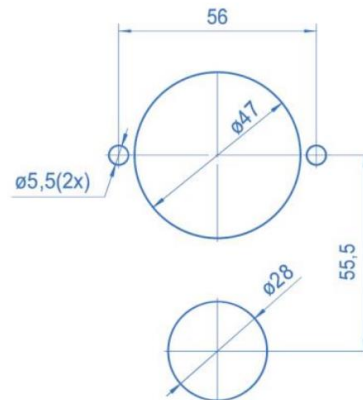


EM15 / EE15 Panel-mounted Type EP

spectro lab



Panel-mounted tapping point
with flow control / shut-off valve



Bore template for installation

Specifications

- The panel-mounted tapping point is used for installations into panels between 2 and 8 mm thick.
- The panel-mounted version consists of an inlet adaptor made of brass or stainless steel respectively with 1/4"-NPT female thread, a plastic holder, a round faceplate (2-5 mm panel) and assembly accessories.

Technical data

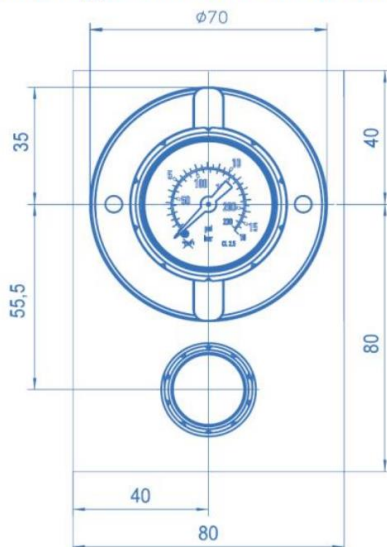
Materials

Inlet adaptor:	brass or SS 1.4404 (316L)
Holder:	Polypropylene GB30
Covers:	Polypropylene GB30

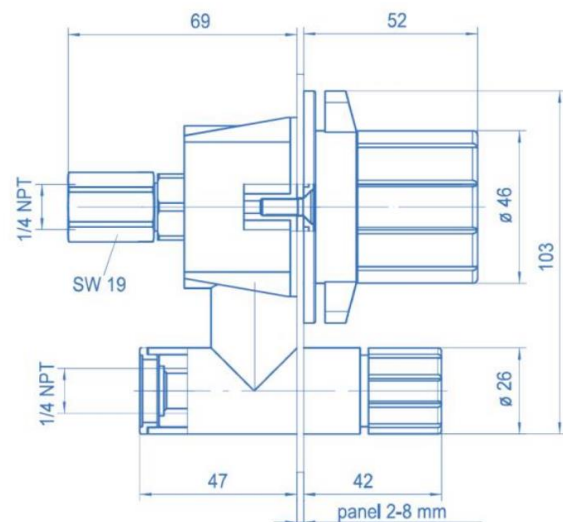
Connections	inlet:	1/4"-NPT female
	outlet:	1/4"-NPT female

Weight	ca. 0.8 kg
---------------	------------

Panel-mounted type with valve in the outlet



Front view with recommended modular dimensions



Side view with interface dimensions for a panel 2 mm thick